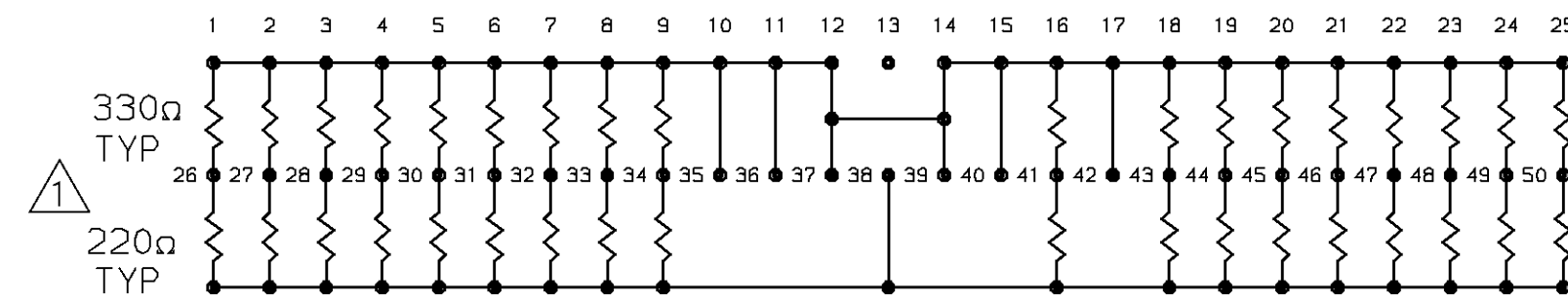
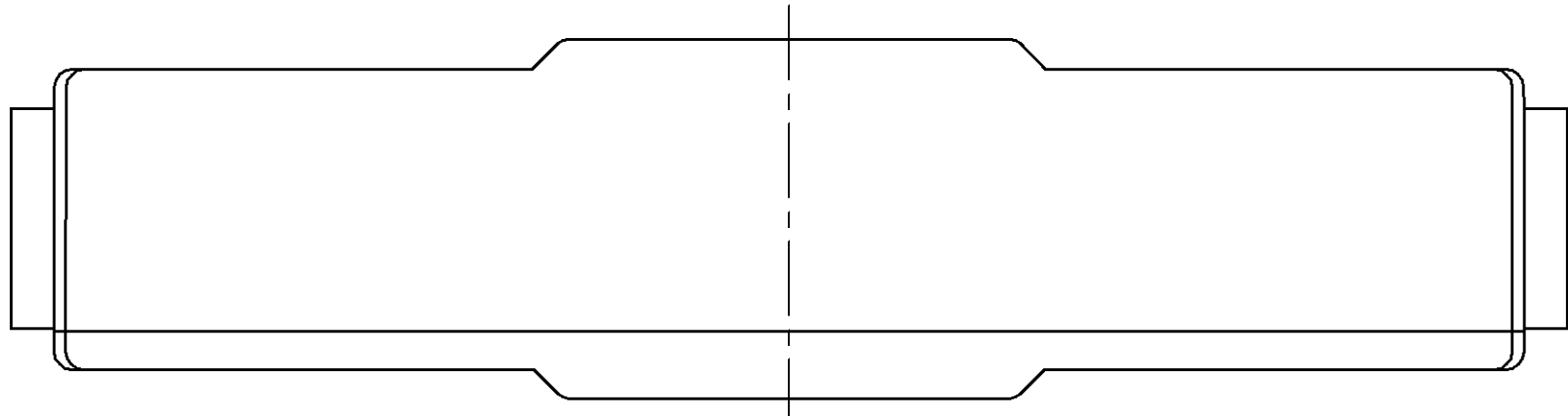
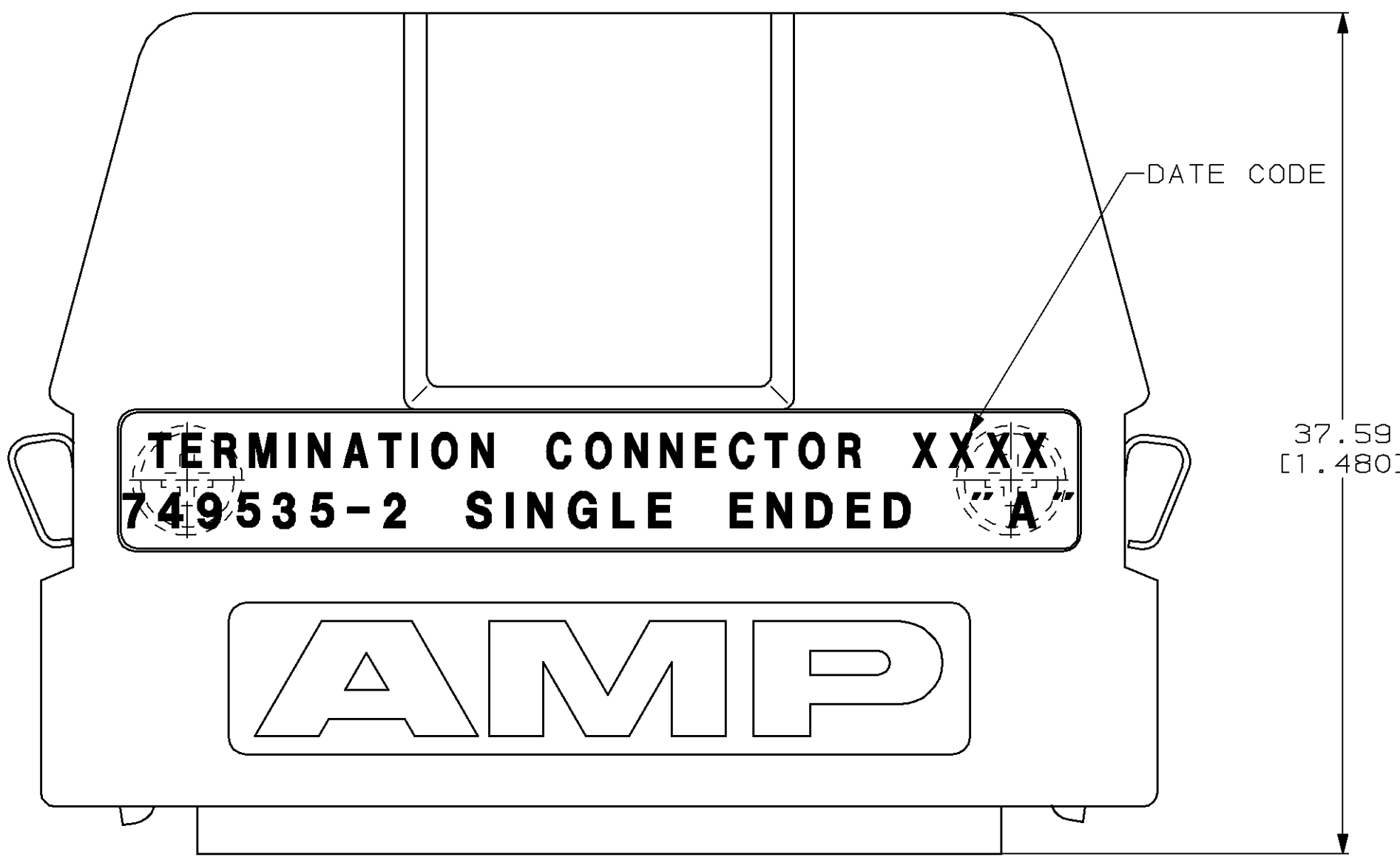


REVISIONS				
ZONE	LTR	DESCRIPTION	DATE	APPD
E		REV PER EC 0020-601-93	10/27/93	PR
F		REV PER EC 0020-1283-94	01/04/95	PR

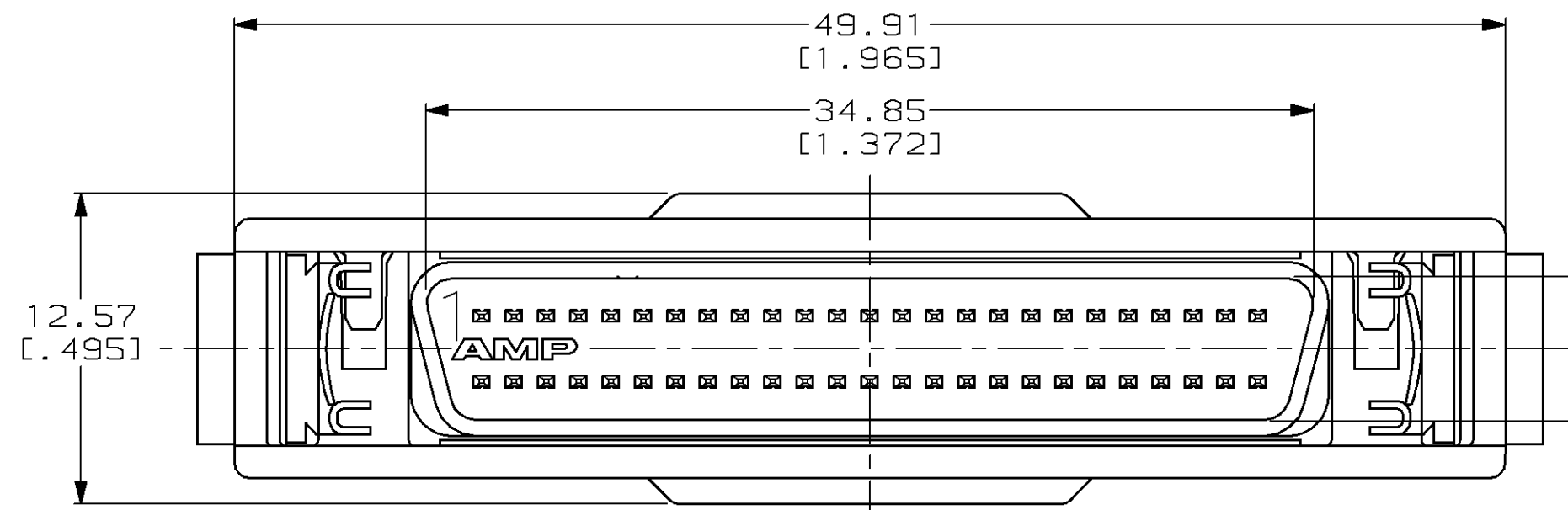


SINGLE ENDED SCHEMATIC



37.59 [1.480]

35.46 [1.396]



5.69 [.224]

TOLERANCE: ±5%

AS SHOWN	749535-2
REMARKS	PART NO

DO NOT SCALE PRINT. UNLESS SPECIFIED DIMENSIONS IN mm [INCHES] TOLERANCES ON : 2 PLC DEC ±.25 [.010] 3 PLC DEC ± - ANGLES ± -	DR 09/25/89 S.G.SMITH	AMP AMP INCORPORATED Harrisburg, Pa. 17105 NAME TERMINATION CONNECTOR AMPLIMITE .050 Series 50 POSN, PLUG
	CHK 09/25/89 K.ULERY	
APPD 09/25/89 B. MOSSER		
APPD 09/25/89 E.MYERS		
MATERIAL HOUSING: ZINC DIE CASTING CONTACT: PHOS BRONZE INSERT: THERMOPLASTIC RESISTOR: THICK FILM NETWORK ON ALUMINA SUBSTRATE LATCHES: STAINLESS STEEL	PRODUCT SPEC -	SIZE C
FINISH HOUSING: NICKEL OVER COPPER CONTACT: 30μ" GOLD OVER NICKEL LATCHES: NONE	APPLICATION SPEC -	CAGE CODE 00779
	WEIGHT -	DRAWING NO 749535-2
		SCALE 4:1
		SHEET 1 OF 1